



IMPORTANT INFORMATION PLEASE READ FULLY

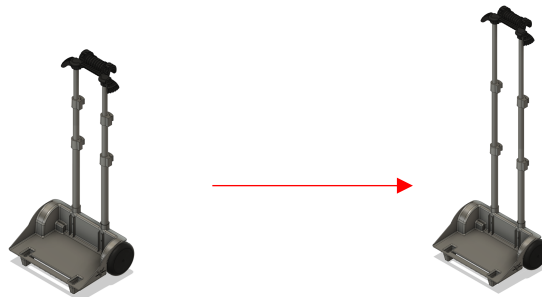
USER GUIDE

PHOENIX SYSTEM

To achieve best performance when using your Phoenix System undertake the following process. This process will determine if you need to adjust the bracket on your trolley to fit your wheelchair.

CONNECTING:

1. Open the clips **(7)** on the Trolley's telescopic handle **(8)** and extend your Trolley to the desired height – **DO NOT EXTEND BEYOND RED LINE** - so that the underside of the Bracket **(5)** rests on your backrest bar. Close the clips so that the handle is secure.



The trolley should be sitting at an angle no greater than 60°. A greater angle may result in the trolley becoming stuck under the wheelchair when moving backwards. Extend your trolley further to get a smaller angle.

2. If the bracket **(5)** is set to the correct size for the diameter of your chair backrest bar you will be able to push down using the palms of your hands until the bracket clicks over the backrest bar.



CAUTION FINGER TRAP

Ensure fingers are clear before pushing down on the bracket

3. Using the palms of both hands push down together and firmly. The bracket should be tight fitting requiring some effort to click over the bar. The tighter the fit the better the performance. Another method of connecting is to connect one side and then the other by pushing down on the top corners of the trolley one side at a time. This staggered process can make connecting tight fittings easier.

4. If the bracket is too tight to click over the backrest bar on your chair or the connection is not tight enough once engaged you should follow the *setup process*.

DISCONNECTING:

To remove your Trolley from your chair, hold onto **one** of the side handles (**6**) located on the left and right of your Trolley bracket and pull upwards.



If a Phoenix System bag is connected to the Trolley you can also slide your hand under **one** of the upper side handles located on the left and right of the back of the bag and pull upwards.

When your trolley is not attached to your chair and you have a bag attached we recommend retracting the trolley handle and protecting it with the protective cover fitted at the top of your Phoenix System bag. This should be done when checking a bag in to fly.



CONTENTS



Spare screws, spacers and tubular insert are in the inside of your Phoenix System bag.

With your Phoenix System you will have received:

1.



1 x tubular sleeve 18mm (thick construction) / 1 x tubular sleeve 22 mm (thin construction)

2.



2 x M6 x 20 mm screws
2 x M6 x 25 mm screws

3.



2 x M6 Nylock nut

4.



14 x Nylon spacer

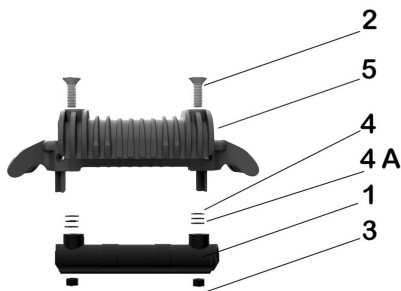
4A.



2 x retaining washer

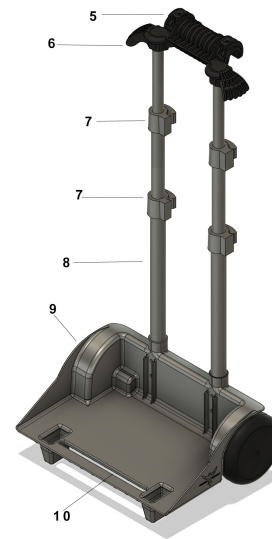
5.

1x Bracket Fitted to Trolley.



6.

1x Phoenix System Trolley



It is not recommended to remove bracket **(5)** from the Trolley unless it is damaged and requires replacing. The wheels on your trolley can also be replaced if damaged.

GUIDANCE:

The best performance is achieved with the tightest connection you can clip over the backrest bar on your chair.



When moving heavy loads over thick carpet a tight connection is required so the trolley doesn't detach from the chair.

To achieve a good fit for your chair a working combination of sleeve choice 18mm or 22mm combined with the correct number of spacers needs to be found.

The more spacers placed between the sleeve and the bracket the looser the fit will become. The less spacers used the tighter the fit will be.

The tightest fit (fitting the narrowest possible backbar) is achieved with the **thick** 18mm tubular sleeve in combination with less spacers. The loosest fit (fitting the widest possible back bar) comes from using the **thin** 22mm tubular sleeve in combination with the longest screws (25mm) and the maximum number of spacers.



If the diameter of the backrest bar on your chair is 18 – 20mm the 18mm sleeve is recommended. Backrest bar diameters 21 -23mm should use the 22mm sleeve.

SET UP:

Located in the top of the bracket **(5)** connected to your Trolley there are two screws **(2)**. Using a 4mm hex wrench (not supplied) loosen the two screws and remove the tubular sleeve **(1)** (take care not to drop the M6 nuts) **(3)** Remove the retaining washer **(4A)** located on the screw shafts either side behind the tubular sleeve.



Making a tighter fit:

Remove equal numbers of plastic spacers **(4)** from each screw shaft left and right **(2)** Replace retaining washer **(4A)** before putting the tubular sleeve **(1)** back in place in bracket **(5)** Insert M6 nut into hex shaped cavity within sleeve ensuring domed top of the nut is facing outward and tighten the two top screws. Repeat the above process until the desired fit is achieved. If you find the tips of the screws **(2)** are protruding below the sleeve and will touch the bar on your chair use the shorter screws provided.



A small adjustment goes a long way. When setting up avoid over tightening the top screws as leaving some capacity to tighten further will allow room for fine tuning adjustment. Even a half turn of these screws will have a noticeable effect.

To make a less tight fit:

Add plastic spacers **(4)** to the shafts of the two screws **(2)** and if necessary use the longer screws provided. When you have found the correct combination of sleeve **(1)** and spacers **(4)** that best works for you the connection should be stiff to push into place and should fit snug to the backrest bar. Once you have achieved the right connection for your chair, you will not need to adjust the bracket again.

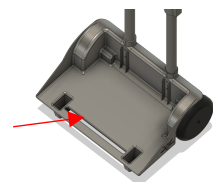
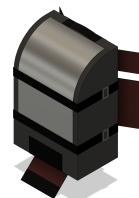


Use the correct length of screws provided to avoid scratching the backrest bar. If the tips of the screws **(2) protrude below the sleeve **(1)** use shorter screws.**

CONNECTING BAG TO TROLLEY

Phoenix System Bags attach to the Trolley using hook and loop (velcro) situated on the back and bottom of the bags.

1. Open the hook and loop flaps on the back and bottom of your bag and push bag onto the trolley base **(9)**.
2. Thread the flap of hook and loop on the bottom of your bag through the slot at the bottom of the trolley **(10)** and close against the loop surface on the front of the bag.



3. Wrap the flaps on the back of your bag around the trolley tubes (8) and secure together.

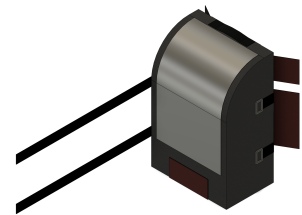


To watch a demonstration video visit www.phoenixinstinct.com

CONNECTING ADDITIONAL PHOENIX SYSTEM BAGS

If you have more than one Phoenix System Bag they can be connected to be used on the trolley together.

1. Attach the largest bag you are using to your trolley using the instructions above.
2. Unsecure the two long straps on the front of the bag on the trolley.
3. Thread the two straps through the loops on the back of the second bag – two at the top (the two grab handles) and two further down the bag.
4. Thread the two straps back through the loop buckles the original bag. Pull these as tight as you can for a secure connection.



It is best to try and connect the second bag so that it is in line with the bottom of the first bag already on the trolley. This will help the two bags to stand upright.

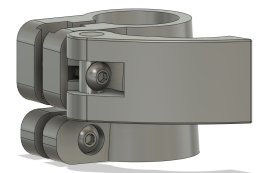


ADJUSTING PHOENIX SYSTEM TROLLEY CLIPS

You will need:

2.5mm Allen Key/ Hex Key (not supplied)

You may find that over time the clips (7) on your Phoenix System Trolley need adjusted. We recommend that these clips are tight to close to avoid them opening during travel, regularly check the tightness and adjust as needed. This can be done using an Allen/ Hex Key (not supplied).



Wheelchair towable article Patented to Phoenix Instinct Ltd in UK, USA patent pending EU